

DOGA^{TEC}

Mit Sicherheit montiert

Prozess-Management

System zur Prozesssteuerung und Überwachung

Process supervision and traceability smart controller

 DPM[®]Pilot



www.dogatec.de

DOGA PROCESS MANAGEMENT Pilot

Process supervision and traceability smart controller

The **DPM**Pilot controller, designed and manufactured by DOGA, supports you in the deployment of Industry 4.0 in your manufacturing processes.

As a true conductor of your assembly station, **DPM**Pilot manages the tools and accessories, guides the operator, and ensures traceability of results.

DPMPilot can manage a variety of your operations and allows you to increase operator versatility while reducing training time.

SUMMARY

Pages

- ▶ **4** AN INNOVATIVE SOLUTION WITH UNIQUE BENEFITS
- ▶ **5** FEATURES
- ▶ **5** FREE CHOICE OF TIGHTENING TOOL BRAND
- ▶ **6** POWERFUL AND INTUITIVE INTERFACE
- ▶ **7** TECHNICAL CHARACTERISTICS
- ▶ **8** AVAILABLE VERSIONS
- ▶ **9** VERSIONS CONTENT
- ▶ **10** OPTIONAL EQUIPMENT



AN INNOVATIVE SOLUTION WITH UNIQUE BENEFITS

Workstation-oriented design
meets requirements of your industrial
assembly processes

✓ **Security: integrated and autonomous system**

DPM®Pilot controls workstation equipment autonomously through local connections.

- No risk of production downtime due to network or server issues
- Process management information are integrated and always available

✓ **Versatility: compatibility with tightening tools available on the market**

DPM®Pilot has been designed to communicate with a variety of brands.

- DOGA
- STANLEY®
- Tohnichi
- Open protocol tools
- etc.

✓ **Ergonomics: easy and intuitive use**

Thanks to **DPM®Pilot**'s user-friendly interface, configuring your assembly sequences does not require a computer or automation skills.

DPM®Pilot takes care of the entire process, guides operators, decreases their training time and increases their versatility.

✓ **Traceability: protected data**

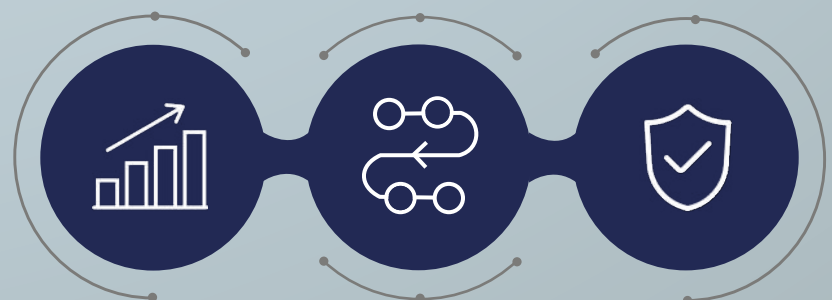
DPM®Pilot saves results locally or remotely.

- Recording of all process datas
- Creation of production reports

INCREASE YOUR
PRODUCTIVITY

CONTROL
YOUR PROCESSES

ZERO DEFECT
ASSEMBLY



FEATURES

Error proofing

- Compliance with predefined operating instructions
- Using the right tool at the right time with right settings



Operator guidance

- Improved efficiency
- Reduction of training time
- Maximizing versatility



Multi-protocol

- Compatible with various tightening tools
- Communication with equipment of the production line



Traceability

- Recording of all process data
- Creation of production reports



FREE CHOICE OF TIGHTENING TOOL BRAND

TORQUE REACTION ARM

Compatible with all DOGA torque reaction arms equipped with position encoders.



GÉOLOLOCATION

SMARTTRACK 3



ACCESSORIES

Barcode scanner, NFC reader, printer, etc.



INDUSTRIAL EQUIPMENT

Bit tray, socket tray, pick to light sensors, camera, PLC, tester-reader EZ, etc.



TIGHTENING TOOLS

Compatible with tightening tools from a wide number of brands.

DOGA



STANLEY®



TOHNICHI / CRANE



ATLAS COPCO



DESOUTTER



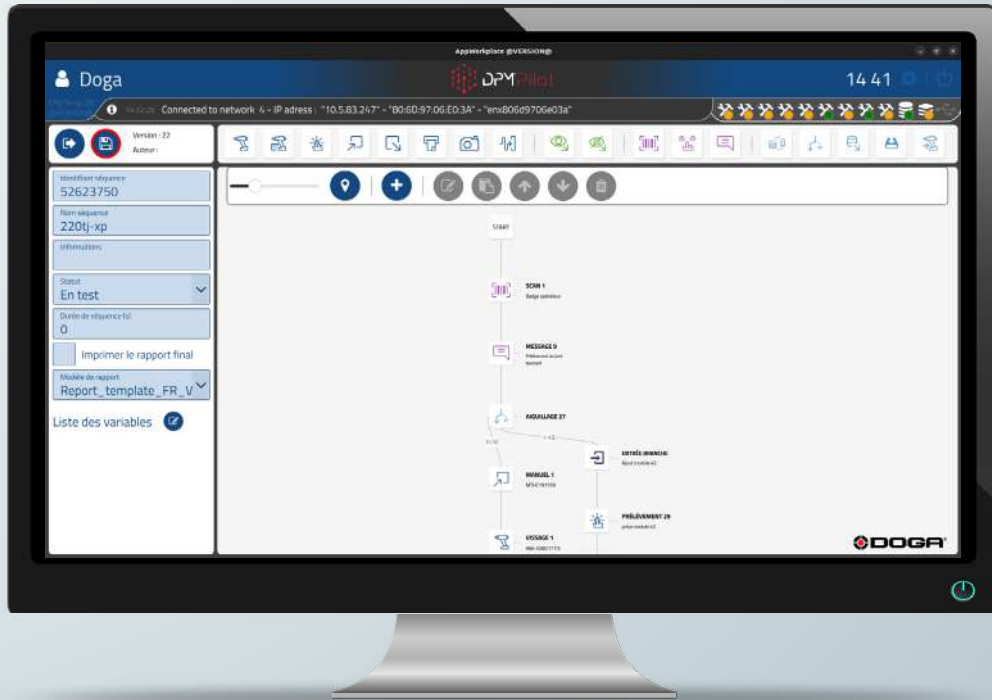
KOLVER



POWERFUL AND INTUITIVE INTERFACE

USER-FRIENDLY AND INTUITIVE SEQUENCE EDITOR

- Graphical navigation: each icon represents a function
- Clear and comprehensive sequencing programming
 - No coding skills are required



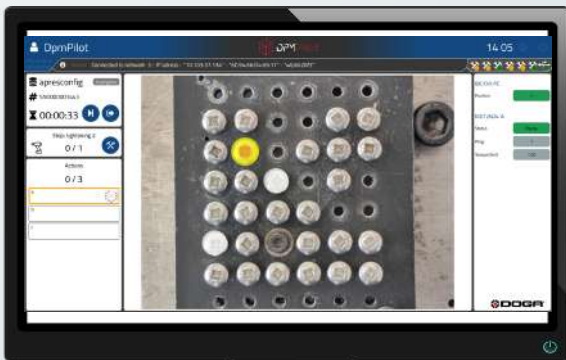
EASY AND ERGONOMIC CONFIGURATION

- Auto-selection of connection parameters for each tool
- Customizable tool designations for easier identification



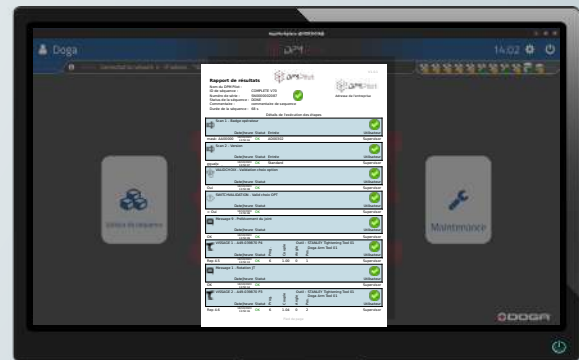
OPERATOR GUIDANCE

- Visual instructions
- Error proofing



RESULTS

- Recording of all process data
- Local or remote storage (PDF, CSV, SQL)
 - Automatic report editing



DPM[®]Pilot TECHNICAL CHARACTERISTICS

- ▶ Operating system: embedded Linux (Linux Kernel 5.2)
- ▶ x 4 inputs and x 4 integrated 24 V digital outputs
- ▶ x 2 separate networks:
 - x 1 WAN network port for external network connection
 - x 4 LAN network ports for connecting tools and accessories
- ▶ Suitable with Full HD or standard touch screens with HDMI connection
- ▶ Storage capacity available for the application: 128 GB
(for sequences between 3.5 and 5 MB and 150 KB results files)
 - Storage example 1: 50 sequences and 850,000 results
 - Storage example 2: 1,000 sequences and 820,000 results
- ▶ x 2 USB ports (expandable with external USB switch) for printer, barcode scanner, badge reader, etc.
- ▶ Up to 20 connected tightening tools
- ▶ x 8-inputs, x 8-outputs extension with the add-on **DPM I/O Module** (up to 2 add-on module)
- ▶ Up to 2 connected analog position control Digilink modules

AVAILABLE VERSIONS

3 versions available

Select your version according to your needs.

	 DPM Pilot Standard	 DPM Pilot Advanced	 DPM Pilot Expert
 Sequences editor	✓	✓	✓
 Start sequence and serial number backup by barcode scanning	✓	✓	✓
 Information input with keyboard (touch or remote)	✓	✓	✓
 Execution and control of assembly sequences	✓	✓	✓
 Operator guiding instructions with image/video/PDF	✓	✓	✓
 Internal storage of results	✓	✓	✓
 User management	✓	✓	✓
 Digital Inputs and Outputs	✓	✓	✓
 Printing labels during sequence	✓	✓	✓
 Maintenance menu	✓	✓	✓
 Storage of results on your network	✓	✓	✓
 Absolute position control		✓	✓
 Analog inputs		✓	✓
 Image capture to be included in the result report			✓
 Communication on field networks (Modbus)			✓
 Link to your process databases			✓
 Connection to other interfaces (retrieving results)			✓

VERSIONS CONTENT

DPM[®]Pilot Standard



- ▶ DPM[®]Pilot Interface
- ▶ Support foot
- ▶ 4-port USB hub
- ▶ Power cable
- ▶ x 2 rear mounting systems

Model	Code (EU)	Code (US)	Code (UK)
DPM [®] Pilot Standard	P200011	P200021	P200031

DPM[®]Pilot Advanced



- ▶ DPM[®]Pilot Interface
- ▶ DigiLink module for position control management
- ▶ DigiLink external power supply
- ▶ Support foot
- ▶ 4-port USB hub
- ▶ Power cable
- ▶ x 2 rear mounting systems

Model	Code (EU)	Code (US)	Code (UK)
DPM [®] Pilot Advanced	P200012	P200022	P200032

DPM[®]Pilot Expert



- ▶ DPM[®]Pilot Interface
- ▶ DigiLink module for position control management
- ▶ DigiLink external power supply
- ▶ Support foot
- ▶ 4-port USB hub
- ▶ Power cable
- ▶ x 2 rear mounting systems

Model	Code (EU)	Code (US)	Code (UK)
DPM [®] Pilot Expert	P200013	P200023	P200033

OPTIONAL EQUIPMENT

DigiLink

This module manages position control and analog inputs. It works with torque reaction arms equipped with position encoders.

- ▶ x 4 analog 0-10 V inputs
- ▶ x 2 inputs and 2 outputs digitals 24 V
- ▶ External 24 V DC power supply
- ▶ Modbus TCP communication with **DPM®Pilot** interface



Model	Code (EU)	Code (US)	Code (UK)
DigiLink	P200014	P200024	P200034

DPM I/O Module

DPM®I/O Module expands the number of additional inputs and outputs.

- ▶ x 8 inputs and x 8 outputs 24 V digital
- ▶ 220V AC power supply
- ▶ Built-in 24 V DC power supply
- ▶ Modbus TCP communication with **DPM®Pilot** interface



Model	Code (EU)	Code (US)	Code (UK)
DPM®I/O Module	P200015	P200025	P200035



DPM Wiring Module







DPM®Wiring Module simplifies connection to inputs and outputs of the **DPM®Pilot** interface.



Model	Code
DPM®Wiring Module	P200006

Other optional equipment

Désignation	Code	
19-inch industrial HD touch screen	P200045	
19-inch industrial HD screen	P200044	

Designation	Code	
Wireless AZERTY keyboard with pad	P200042	
HDMI cable - 2 meters	P200043	
Wired industrial scanner 1D/2D USB type DS3608	P180778	
Wireless industrial scanner 1D/2D USB type DS3678	P181874	
Wired universal scanner 1D/2D USB type DS2208	P181864	
Wireless universal scanner 1D/2D USB type DS2278	P181865	
Printer direct thermal mode ZD421	P169073	
Printer thermal transfer mode ZD421	P108583	
NFC reader	P207176	

YOU NEED A SPECIFIC SOLUTION?



Custom developments

Contact us if you need:

- Additional features such as a specific process step
- A specific data inputs/outputs interface with your information system
- Compatibility with your equipment (tightening, control, measurement)





YOUR NEEDS HAVE CHANGED?



Upgrades to a higher version

If you'd like to upgrade to a higher version of your **DPM®Pilot** interface, you can order a software upgrade without changing your interface.

Model		Code
DPM Pilot Standard software upgrade to DPM Pilot Advanced	 DigiLink Module needed 	P200094
DPM Pilot Standard software upgrade to DPM Pilot Expert		P200095
DPM Pilot Advanced software upgrade to DPM Pilot Expert		P200096

DPM®Pilot IN VIDEO



DOGATEC

Mit Sicherheit montiert

Vertrieb Deutschland und Österreich
DOGATEC GmbH | D-73430 Aalen |
Tel 0049 7361 8049950 | www.dogatec.de |

© DOGA | DOC.60140.06/25

We constantly strive to improve our products. As a result, the dimensions and indications in this document may not always correspond to the latest production. By explicit agreement, our sales are subject to a reservation of title (the provisions of the French 05/12/1980 Act are therefore fully applicable).